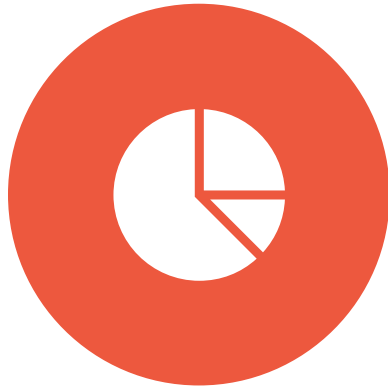


Finding a way

THE NORTH EAST FLEXIBLE
LEARNING CENTRE'S STORY

Today's Workshop



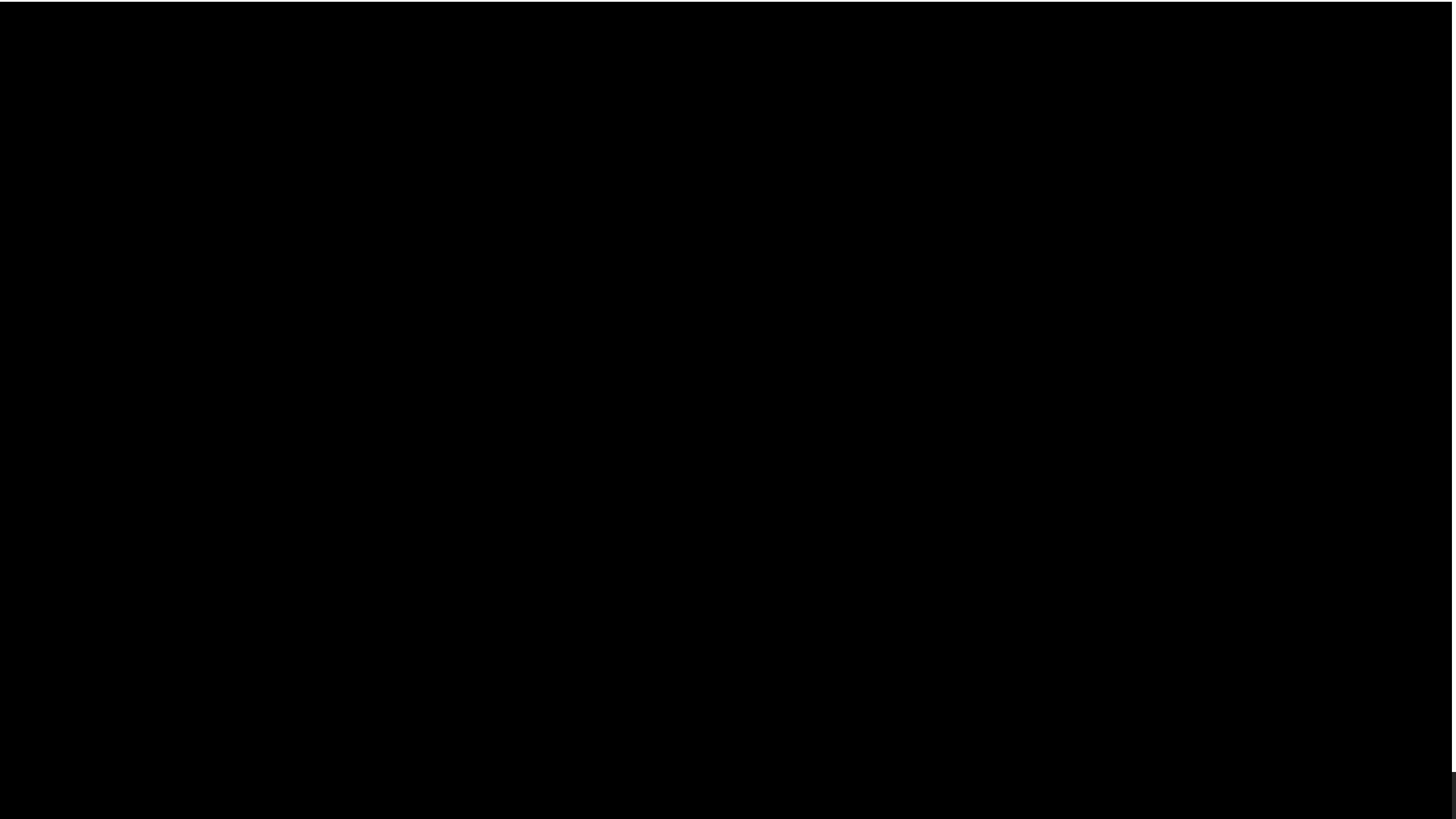
LEARNING GOAL:
TO UNDERSTAND THE JOURNEY IN RURAL
VICTORIAN IN PROVIDING HIGH QUALITY PUBLIC
EDUCATION TO ALL



SUCCESS OUTCOMES;
- KNOW THE NEFLN
- UNDERSTAND THE APPROACH
- CHANGE THE THINKING



5 MINS - US
10 MINS - DISCUSSION
5 MINS - HANDOUT
10 MINS - Q&A



Celebrating
10 Years of
Public Education Service Provision



-  *flexible*
Learning Centre
Est. 2014
-  *flexible*
Learning Centre
Est. 2014
-  *flexible*
Learning Centre
Est. 2014
-  *flexible*
Learning Centre
Est. 2012

Changing the thinking of public education

Vern Hilditch

Reliability Respect
Resilience Resourcefulness

Vision Mission Values

*Every Student,
Every Opportunity,
Success for all.*



Vision

The NEFLN is an educational setting dedicated to establishing high expectations and personal achievement in our students. It is a network that fosters quality relationships, positivity and connection to the community by engaging young people with education.

Mission

To provide students with an educational option that builds confidence, aspiration and skills to enable a transition to mainstream education, further education or employment. Our education community supports our students to:

- Be confident, capable and self-motivated.
- Be comfortable living in a world of diverse people, cultures, and beliefs.
- Be respectful, tolerant and act with empathy.
- Make meaningful contributions to the local and global community.
- Be critical and creative thinkers.
- Respond positively and appropriately to change and challenges.
- Set high expectations for themselves and strive to meet them.
- Be a safe and confident user of evolving technologies.
- Be aware of pathways and career opportunities and successfully access these.
- Have a strong sense of agency and self-efficacy.

Values

Respect

Respect for self, others and community.

Resilience

Overcoming barriers, persisting to succeed.

Reliability

Committed, dedicated and dependable.

Resourcefulness

Building networks, connections and skills.



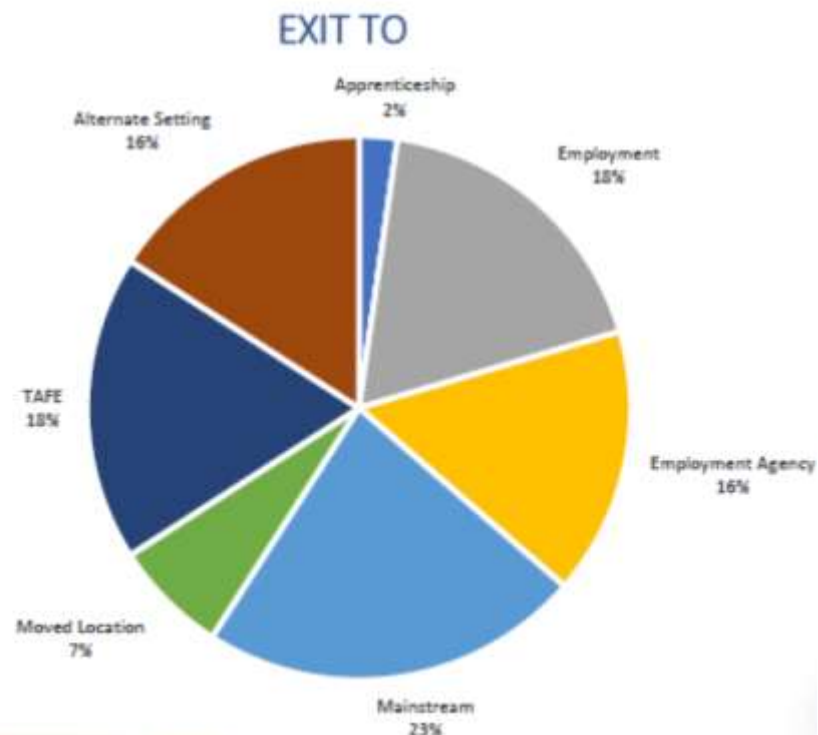
Making change

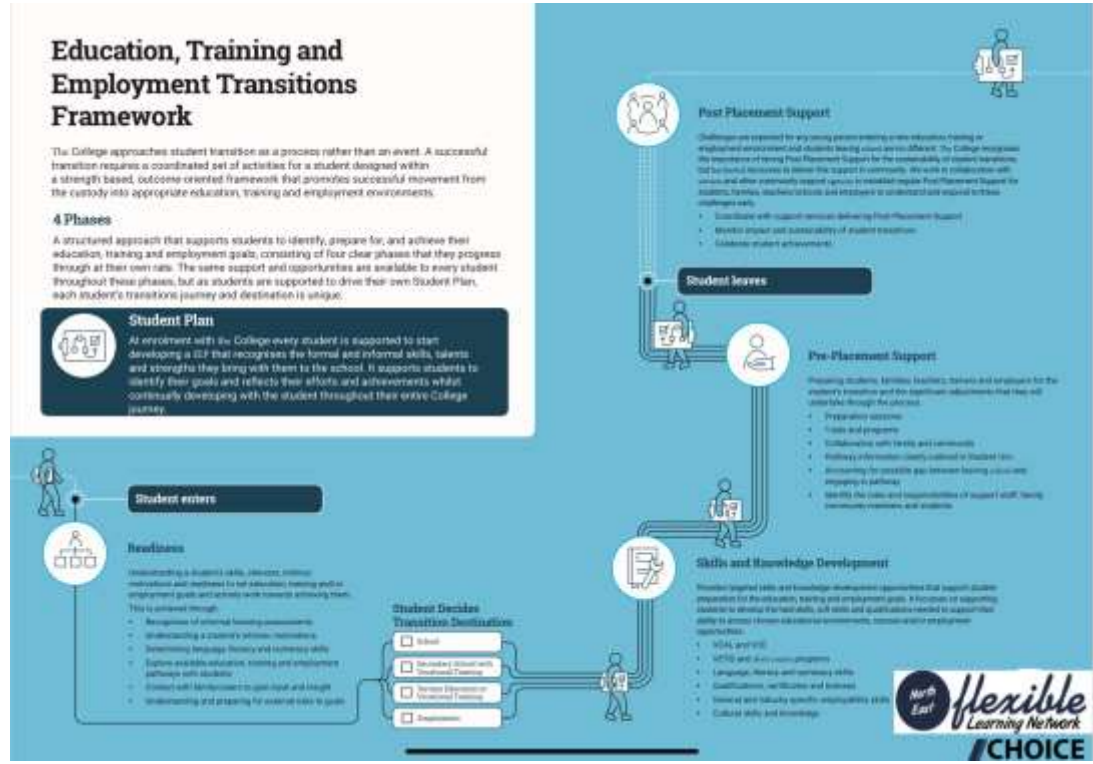
Each year supporting young Victorians to make positive change. Annually 150-160 students transition to the next stage of their journey.

From disconnection to pathway in rural settings.

Student Transitions for 2023

160





Engagement to Transition

School with an Eye on Wellbeing

Students need a school – we have mental health services, we have youth services, we have wellbeing centres, **we need a public school that takes all students and teaches them.**



Student Choice Relationships Sense of Belonging Connection to Community

What our Guardians Say...

Respect
Resilience
Resourcefulness
Reliability

Shepparton FLC

GUARDIAN:

Without the school and staff at Flex my child would have fallen through the cracks at mainstream education. At Flex at least she was offered an education that suited her and her learning abilities.

Seymour FLC

GUARDIAN

I would recommend to anyone that would ask me.

I wish we had been able to join Flexible Learning before year 11.

North East FLC

GUARDIAN

Before A started at this school I was totally worried about their future in school, in life, in everything. After the first year that completely changed. I no longer fear that they will fall through the cracks of schooling or learning or living. Every single person and teacher at this school goes above and beyond to help A succeed not 'fail'. I love them ALL!!

Benalla FLC

GUARDIAN:

As a parent I cannot recommend this educational institute enough. Thank you for everything you do for my girl S, you have all made her come leaps and bounds.

Wodonga FLC

GUARDIAN

I would definitely recommend Flex to lads who need a different structure for learning as compared to mainstream. C has been able to attend school which is a huge effort for him.

Choice Learning

GUARDIAN

You guys are amazing, the changes we have seen in my child is incredible. They are so much happier now. Thank you guys for that. I have my beautiful child back



School Wide Adjustments Form

The Benalla, Seymour, Shepparton and Wodonga Flexible Learning Centres are all campuses of Wodonga Senior Secondary College.

These Campuses provide students who experience difficulties accessing mainstream school an educational pathway tailored to their often complex educational, social, developmental, psychological, health, legal or family situation.

In particular, our focus is on those who have not been able to cope with attending a regular school setting and have drifted out of education. Many of our students experience long periods of homelessness, issues with family connectedness, poverty, and mental health issues.

It is a network that fosters quality relationships, positivity and connection to the community by re-engaging young people with education.

- Allocated Learning Mentors to match student need
- Individual Education Plans
- Career Action Plan
- Small Class Sizes
- Individual timetables that are flexible, moderated and adjusted on an as needs basis
- Transport support for school pick up
- Extensive Induction program to support re-engagement
- Therapeutic programs: Art, Music, Animal Assisted Therapy
- Relaxed dress code, no uniform
- Facilitate connections to support services (community services)
- Breakfast, Lunch and Take Home Food program
- All school stationery, text books, equipment all provided
- Regular breaks provided
- Additional Family Support (food, access to services)
- Regular and ongoing contact with parents/carers
- Home visits conducted by Wellbeing Team
- Team Around the Learner Approach
- A Differentiated approach to Curriculum Delivery and Assessment that anticipates and responds to students' learning differences
- Whole-school professional learning for the management of physical and psycho-social medical conditions, including Trauma Informed Practices.



Inclusion Reforms

- Complimentary Settings (FLOs, Outdoor School, Specialist Setting)
- Navigator Program
- SSS (Psychologists, Speech Path, Social Workers)
- Senior Wellbeing Engagement Officers
- Koorie Support Officers
- Mental Health Practitioners
- School Nurses & GP in Schools
- Dentists in Schools
- Disability Inclusion Team

Year
2024<https://www.youtube.com/watch?v=E9bwMVob4DE>

North East Flexible Learning Network



**Doing School Differently
Conference 2024**



Website
<https://www.nefln.vic.edu.au/>

Presented by
Vern Hilditch
Brad Hearn
Sharee Fisher
Michelle Sheehan

Handout

We provide information regarding our;

School framework,

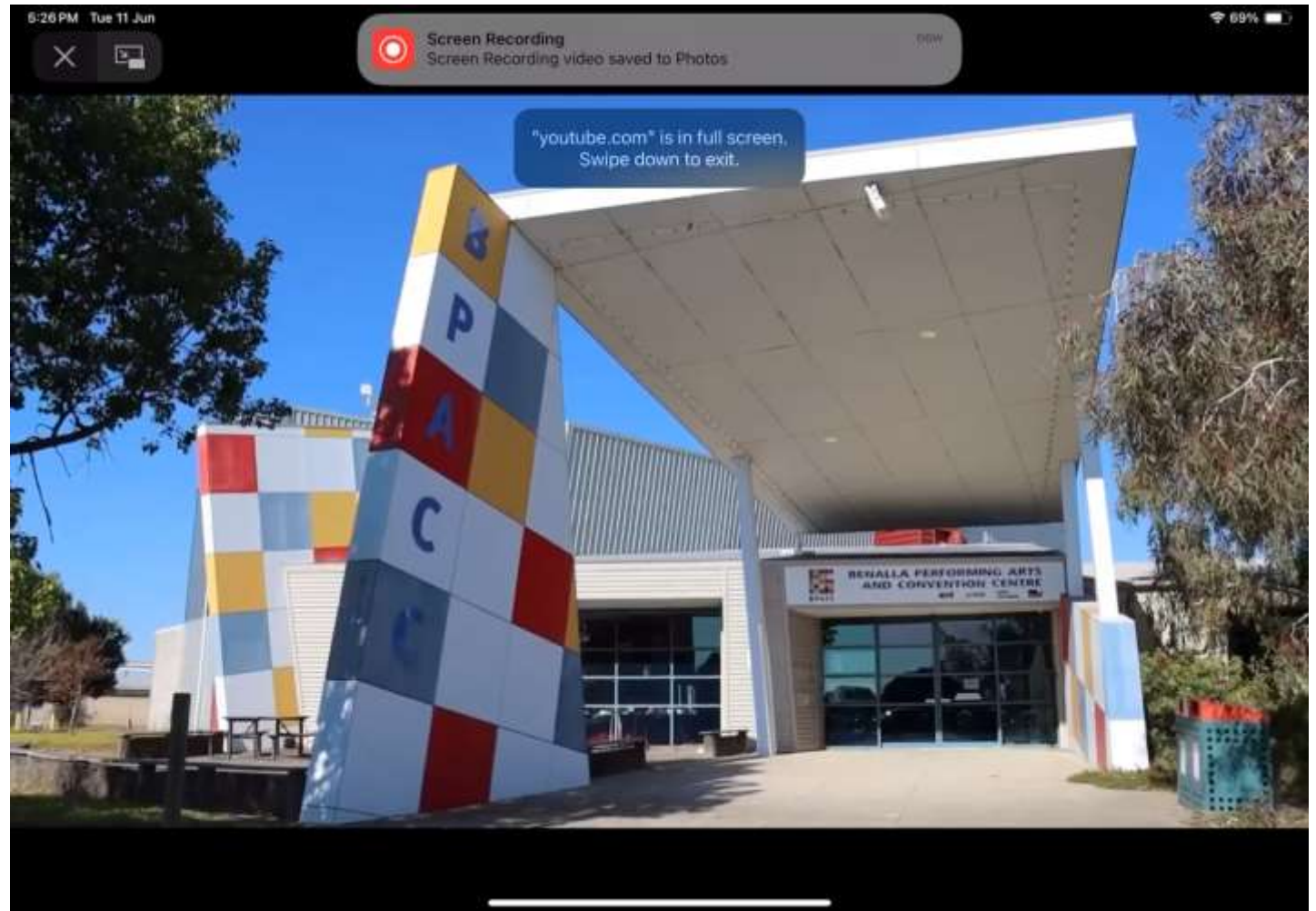
Organisational structure,

Contemporary strategic planning for the year,

along with contact information and policy information.

Curriculum Day – 2024 Expanded

This year we opened up our Network Curriculum day to encourage more complimentary applied learning educators to attend localised professional development in regional Victoria.



Any Questions? ...
