



Contact Information

Reception – 0419 481 754
seymour@nefln.vic.edu.au

Term 1 Calendar

Wed 21st May – Staff conference – No school for students.
Wed 4th June – Catch Up vaccinations -on site
Monday 9th June – Kings Birthday Holiday
Wed-2nd July – Parent Teacher Interviews
Friday – 4th July – Last Day of Term 2
Monday – 21st July – First Day of Term 3



Contact Information

Shane Elliott
 Principal – 0408 585 804
 shane.elliott@education.vic.gov.au

Principal's Update

Dear Parents and Carers,

I hope this newsletter finds you well and that you all have had a positive and productive start to the term. As always, I'd like to take this opportunity to share a few important reminders and updates with you.

The Importance of Regular Attendance

Regular school attendance plays a vital role in your child's academic success and overall wellbeing. Being present in class ensures that students remain engaged in their learning and connected to their school community. We understand that sometimes absences are unavoidable due to illness or other personal circumstances. If your child is unable to attend school, please make sure to notify the school office or your child's Mentor as early as possible. This helps us maintain accurate records and, most importantly, ensures your child's safety and welfare.

Student Safety on Campus

We remain firmly committed to providing a safe and supportive environment for all students. As part of our adherence to safety and Occupational Health and Safety (OHS) guidelines, we kindly remind families that students are required to wear closed-toe (covered-in) shoes while on school grounds. This simple precaution helps to prevent accidents and allows students to participate safely in all school activities.

Exciting Term

This term has been full of engaging and enriching experiences. We have a variety of events planned, including excursions, incursions, and our upcoming parent-teacher conferences. These events are wonderful opportunities for students to extend their learning beyond the classroom and for families to stay actively involved in their child's education.

Communication and Support

We deeply value open and ongoing communication between home and school. Strong partnerships between families and educators play a key role in student success. If you ever have questions, concerns, or would like to share feedback, please don't hesitate to get in touch with your child's Mentor or contact the school office. We are here to support you and your child and are always happy to help.

Thank you for your continued involvement and support. Together, we can ensure that your child enjoys a positive, safe, and enriching learning experience.

Warm regards,

Shane Elliott
 Campus Principal.

Department Directives

No Smoking or Vaping	Mobile Phone Policy	Students Absences
<p>In Victoria, a person must not smoke or vape on school premises or within 4 metres of any pedestrian access point to school premises.</p> <p>The prohibition on smoking includes vaping and applies whether or not the e-cigarette contains nicotine.</p> <p>Cigarettes and e-cigarettes cannot be sold to people under 18 years of age.</p> <p>It is a legislative requirement that schools must display suitable No Smoking or Vaping signs at all pedestrian access points (entrances) to the school grounds. The legislation defines smoking to include e-cigarettes.</p> <p>Smoking and vaping are not permitted during school events and excursions held off school premises.</p> <p>Use or possession of an e-cigarette does not fall under any of the grounds for suspension of a student.</p>	<p>Students who bring mobile phones to school must have them switched off and securely stored during school hours.</p> <p>For the purpose of this policy, a mobile phone is a telephone with access to a cellular (telecommunication) system, with or without a physical connection to a network.</p> <p>Exceptions to the policy may be applied if certain conditions are met. Exceptions can be granted by the principal, or by a teacher. Exceptions must be documented.</p> <p>Schools must provide secure storage.</p> <p>Schools are required to develop a local policy on students using mobile phones, which must include how this ministerial policy will be implemented and may include other personal devices in addition to mobile phones.</p> <p>Schools will manage non-compliance with their local mobile phone policy in accordance with their existing student engagement policies.</p> <p>Schools should review their local policy as part of their regular cycle of review for school policies.</p>	<p>Schools must:</p> <p>have an Attendance Policy as part of their Student Engagement Policy</p> <p>maintain attendance records</p> <p>identify and follow up unexplained absences</p> <p>record student attendance twice per day in primary schools and in every class in secondary schools</p> <p>record, in writing, the reason given for each absence</p> <p>advise parents/carers of unexplained absences, as soon as practicable on the same day of the absence, including for post-compulsory aged students.</p> <p>Please phone/text your student's teacher or reception to inform us of any student absences. If we don't hear from you then we are required to contact you.</p>

Respectful Relationships

Seymour flexible Learning Centre is a Respectful Relationship Partner school. Respectful Relationships is a state government initiative that supports schools to promote and model respect, positive attitudes and behaviours. It teaches our young people how to build healthy relationships, resilience and confidence. It supports young students in dealing with a range of challenges they may face and covers topics including being respectful, resilient, engaged at school and being confident within themselves. Respectful Relationships promotes equality and helps students learn how to build healthy relationships.

Careers

What a busy time we have had in the careers space.

We had 37 students attend the Seymour Careers and Jobs Expo, that was held at Kings Park earlier in the term. It was great to see students engage in hands on activity, approach employers about work possibilities and work placements.

Following that, 10 students attended Careers Day Out in Shepparton. This day allows students to speak to TAFE's, Universities, ADF, Police Force and employers about pathways and employment.

Moving forward we are offering students the opportunity to attend the Trade and Tech Fit Expo at the Melbourne Convention Centre in June.

Later this term we are running the Construction Induction Card (3rd July).
Term 3 the RSA, First Aid, Food Handlers and Barista courses are booked in.

Students are starting to arrange their work placements, which is going to be great to hear how they go.

Please come and find me if you have any questions, or are keen to be involved in an activity.

Thanks, Jana



Ash's Classroom

VCE-VM Personal Development Skills



For PDS, students have been learning about social awareness by exploring a range of global issues identified by the Human Rights Watch in 2025. Students explored issues including youth crime, animal rights, age discrimination and more!

It has been great to see all students demonstrate their understanding of culture, perspective, empathy and compassion while also expressing their own opinions and sharing their experiences!

VCE-VM Numeracy

Shape has been a big focus in Numeracy this Semester and students have explored a range of different concepts relating to 2D & 3D objects including scale, rotation, congruence and polygons. Below are some examples of when students have used scale factor to enlarge an image of their choice!



Costerfield Mine Excursion

On Wednesday 26th March students in the VCE classes were extremely fortunate to have the opportunity to tour the Costerfield mine site operated by Mandalay Resources.

Costerfield mines for gold and antimony, which is used in the manufacture of specialist steel and other industrial applications. The mine has a minimal above ground footprint and works by tunnelling direct to where the correct ore is located (hopefully.) There are kilometres and kilometres of tunnels that stretch from the main site to the processing plant which is ten minutes' drive away by road.

Students were shown around all of the above ground elements of the mining operation and given an insight into the breadth of careers available at Mandalay. Students were shown around the maintenance department where mechanics repair all manner of machinery including diggers, blasting rigs, 4WD vehicles and the remote-controlled loaders used underground. Students were able to watch as an operator drove one of these loaders 1 kilometre underground from a gamers' chair on the surface!

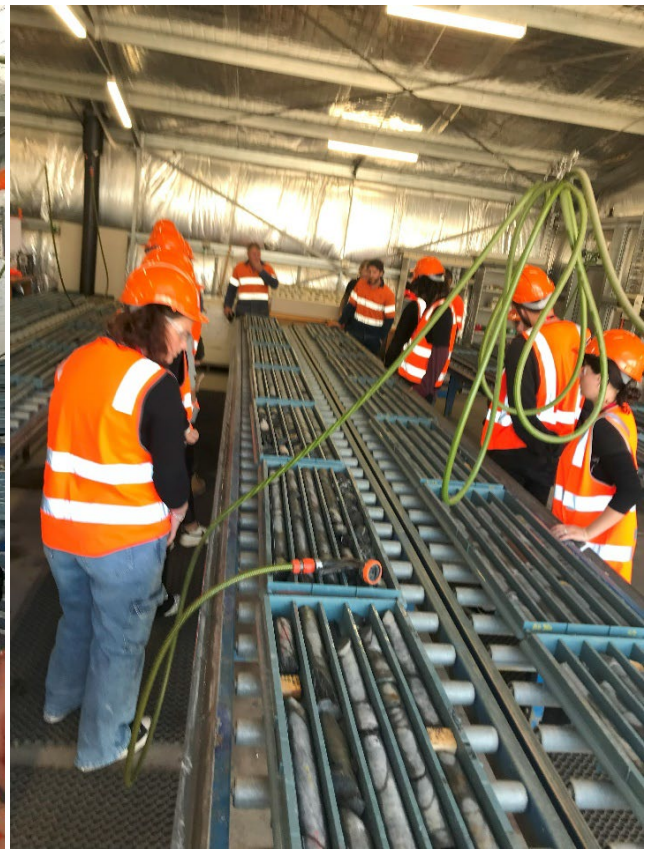
They were also fortunate enough to watch an emergency rescue practice where the members of the mine's emergency team cut open a "crashed" car to remove the occupant safely.

Students were also allowed into the core shed where geologists examine the core samples that are taken to determine which direction the mine should run drives to attain the best result. Students were intrigued to see the lines and colours in the samples that the geologists use to determine where the mine's drives should head.

Finally, everyone piled on the bus to head to the processing plant where the extracted ore is crushed and processed. Students were able to view the entire process and have what each section does explained by a working member of the mine team.

The trip was fantastic. Everyone got a greater appreciation of the diversity of careers available at the mine. All of the mine staff were fantastic, generously and happily taking time to talk to the students and answer any questions they had. All students came away with new ideas on the possibility of working in a mine, perhaps underground, perhaps above ground doing processing and maintenance and the range of apprenticeships on offer. Many thanks to Jana for organising such an engaging and enjoyable experience.





Helen's Classroom

New term, new teacher, new expectations and new goals!

We need to be at school and follow our timetable.

We do our work well and on time.

We listen to instructions.

We have positive goals to meet.

We won't let anyone or anything stand in our way.

Stay tuned for our next instalment!



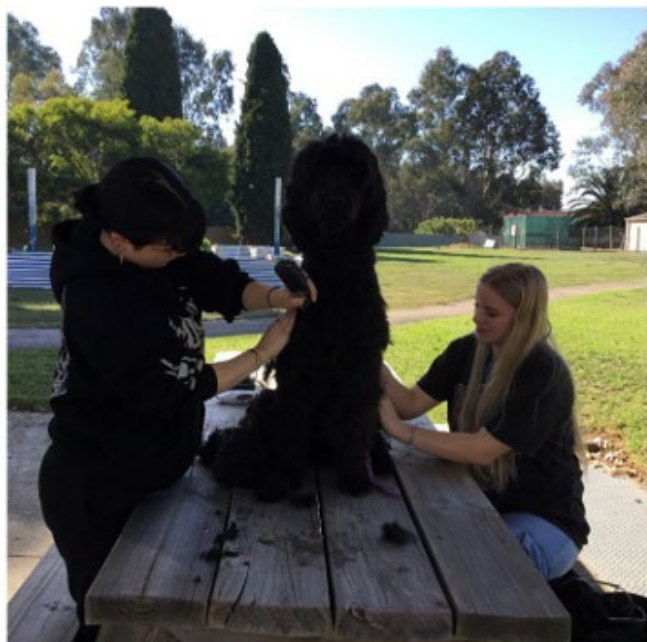
VPC Class of 2025

Animal Studies

Animal Studies students have had a busy last few weeks ticking off practical components. Last week they visited the GV Boarding Kennels and Cattery at Congupna to learn about animal body language, WHS and hygiene in the animal care industry. The highlight was being able to play with the 6 week old puppies. They also had the opportunity to feed the pigs & sheep.



This week Cindy (their instructor) was on site with 2 dogs. Lily gave one dog a health check while Mya & Chloe gave the other one a much needed clipping.



Wellbeing @ the Flexi

Seymour Flexible Learning Centre

Learning is hard work so at lunchtime its nice to see students spending time together, having lunch, soaking up the sun and pretending they are having a meeting.



This Term's theme is "Team work makes the Dream Work", promoting collaboration and supporting each other.





ERIC promotes healthy social and emotional development in all young people by cultivating helpful emotion regulation and impulse control skills.

ERIC worksheets are regularly used with students by Wellbeing worker Brian to help them better manage strong emotions, anxiety and heightened emotions.

RALPH WALDO EMERSON

To laugh often and much;
To win the respect of intelligent
people and the affection of children;
To earn the appreciation of honest
critics and endure the betrayal of false
friends; To appreciate beauty, to find
the best in others; To leave the world
a bit better, whether by a healthy child,
a garden patch or a redeemed social
condition; To know even one life has
breathed easier because you have lived.
This is to have succeeded.

55.

Helplines

Kids Helpline: 1800 551 800

Lifeline: 131 114

Suicide Line: 1300 651 251

Homelessness Assistance: 1800 825 955

National Debt Helpline: 1800 007 007

1800Respect: 1800 737 732

Alcohol & Drug Counselling: 1800 888 236

Foundation House: Supporting Refugees

Gambling Help online

Reporting Child Abuse

Qlife: 1800 184 527

Headspace 5823 8800

Mensline Australia: 1300 789 978

Nurse on Call: 1300 606 024

Parent Line: 1300 30 1300

Sexual Assault Services Victoria : 1800 806 292

Safe Steps Family Violence Resp: 1800 015 188

teacher

[tee-cher] *noun*

A multi-tasking rockstar who lives to inspire
and loves to encourage

Youth Rooms 2025

Mitchell Youth Rooms are fully supervised, FREE, safe and inclusive spaces for all young people aged 12-18.

Join us after school to hang out, grab a snack, listen to some tunes and meet new people - all for FREE!

What's on offer at the Youth Rooms?

- Wifi
- Snacks
- Board games
- Art and craft supplies
- Sporting equipment
- Kitchen
- Nintendo Switch (Broadford, Seymour and Wallan)
- Pool and foosball tables (Wallan)
- Half court and skatepark (Broadford)
- Table tennis (Seymour)

This is a drop in program, simple sign in on the day - come and go as you please!

**Monday 3.30-5pm -
Broadford Youth Room**
152 High Street,
Broadford

**Tuesday 3.30-5pm -
Seymour Youth Room**
Our Place (Next to Seymour
College)
29 Stewart Street,
Seymour

**Wednesday, 3.30-5pm
- Wallan Youth Room**
42 Bentinck Street,
Wallan

For more info, contact us:

 @mitchellyouthservices
 Mitchell Youth Services

 (03) 5734 6200
 youth@mitchellshire.vic.gov.au

*Youth rooms run during school terms and are closed on public holidays





SCHOOL PORTAL

NORTH EAST FLEXIBLE LEARNING NETWORK

YOUR SCHOOL PORTAL

The North East Flexible Learning Network utilises the School Portal mobile app to support the important three-way partnership between the classroom teacher, parents and their child.

School Portal provides real-time access to information to ensure that parents and guardians are kept informed of their child's learning and progression through their secondary education.

The School Portal mobile app has a growing list of functionality and provides access to:

- Download and view student reports
- Approve attendance
- Subject and activity payments
- Notification centre
- Teacher and Campus Leader contacts
- School calendar
- Announcements
- Approve and pay school activities
- Student timetable
- Update personal details

Visit the App store for iOS or the Google Play store for Android devices and search for 'School Portal' to download the app. Once downloaded, launch it and enter either the mobile phone number or email address associated with your child's enrolment at the school. You will then be sent a 6-digit verification code to the email address or mobile number entered, enter this to complete the registration process.



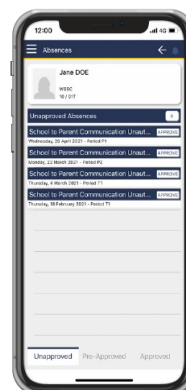
STUDENT ATTENDANCE

Pre-approved attendance

From the School Portal, pre-approved absences can be entered for when it is known in advance that your child will be absent. A note about the absence along with a duration and type of absence can be entered via the portal. This will make staff aware of the absence when they mark their class attendance.

Unexplained absences

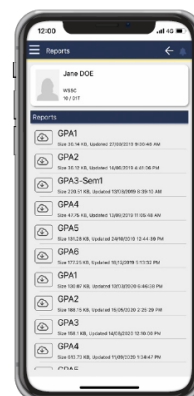
If your child has been absent, an explanation for this absence can be entered via the School Portal by selecting the 'Approved Absences' option from the menu. This will request a type of absence and allow an opportunity for a note to be entered which will be available for your child's teachers to view.



STUDENT REPORTS

Your child's progress reports are available to be downloaded and viewed from the School Portal, these are updated after every reporting cycle to ensure that you have access to the most up to date information.

Historical student reports from their time at the College are also made available through the School Portal.



FREQUENTLY ASKED QUESTIONS

- Q:** Can more than one parent or carer have access to the School Portal?
- A:** Yes, each parent or carer that is assigned to the student upon enrolment can login using their email address or mobile phone number. Please contact your school to update enrolment information.
- Q:** I have children that attend other schools in the area, will they also appear in the same app or will I need different account details?
- A:** Yes, if your school uses the School Portal, these all appear in the one location under the 'My Family' area. Please ensure that your contact mobile phone number and email address are the same across these schools.
- Q:** What if my child has access to my mobile device, will they be able to access the School Portal?
- A:** In addition to the one-time login, a custom 4-digit security pin can be set within the app. Once configured you will be prompted to enter this every time when accessing the app.

STUDENT ACTIVITIES

In the 'Activities' section of the School Portal mobile app, consent and payment can be made for student activities, preventing the need for printed permission slips to be distributed.

Once your child has been invited to participate in an activity, you will receive a push notification through the mobile app. You will then be able to approve their participation, provide an additional note to the staff member organising the event and if applicable, make a payment conveniently through the same interface.

