

# Newsletter

## Important Dates:

- ◆ **Tuesday 21st Nov**  
9 am—4.30 pm  
Studio Visit In Melbourne for students that have participated in the Music Program
- ◆ **Friday 24th Nov**  
**No School**  
Public Holiday in Lieu of Melbourne Cup
- ◆ **Friday 1st Dec**  
9 am—3 pm  
Visit to The Tank Museum at Puckapunyal.  
Lunch Provided
- ◆ **Thursday 7th Dec**  
7.30 am—5.30 pm  
Luna Park  
B.Y.O lunch or money to buy lunch
- ◆ **Monday 11th Dec**  
9 am—3 pm  
Port of Echuca
- ◆ **Wednesday 13th Dec**  
3 pm—8 pm  
Parent Teacher Interviews
- ◆ **Friday 15th Dec**  
End of Year Student Lunch

### Message from Roger

With less than 6 weeks to go before the end of the year, I would like to reflect on the outstanding achievements of the students at the Shepparton Flexible Learning Centre. These outcomes have been enabled by the diligence of the students and the hard work and effort of our fantastic staff.

This year we have seen a number of students successfully complete their Intermediate and Foundation VCAL courses, and there are many who have partially completed their courses. The expectation is that these students will complete their VCAL in 2018.

Eleven students successfully completed the Certificate II Business course which is a great result considering the time commitment required for this course.

Twelve students successfully completed short courses, provided by GoTAFE and received the following certificates:

Food Handlers Certificate

Responsible Service of Alcohol Certificate

Barista Training.

All students have completed many outcomes at either Victorian Curriculum level or in strands of the VCAL programs. Some outstanding artwork has been completed and a special mention goes to Billy Wilson and Sharharnie Atkinson who received first place certificates for their artwork at the Shepparton Show this year.

All students at the Shepparton Flexible Learning Centre are to be congratulated on their improvement in attendance, attitude towards their work and for the manner they have worked with each other and the staff. Well done to all.

A reminder to parents/guardians to encourage their children to participate in the activities organized for the end of the year and to attend the end of year celebration on December 15th.

Roger Gale  
Campus Principal

Last Day of classes  
for Students is  
Friday 15th  
December



(02)5043 7500 

[School Portal](#) [Email](#) [eDiary](#) [LMS](#)

HOME BENALLA SEYMOUR SHEPPARTON WODONGA REENGAGEMENT STRATEGIES

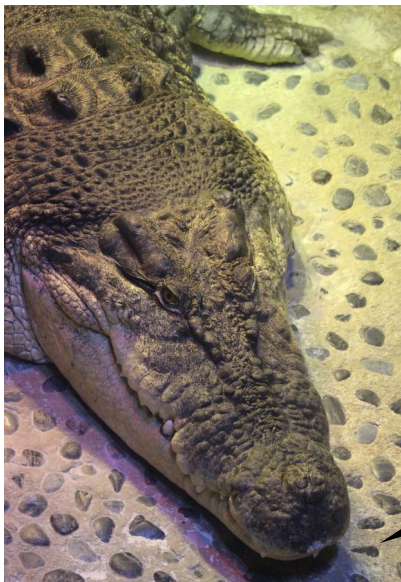
Home / Shepparton

[www.nefln.vic.edu.au/shepparton](http://www.nefln.vic.edu.au/shepparton)

A reminder that our website is up and running. All newsletters are published and available to view if a hard copy doesn't make it home. **Important dates** to remember with regards to excursions and events are also on our webpage for parents and carers to view, these dates are also displayed in campus on the student's notice board.

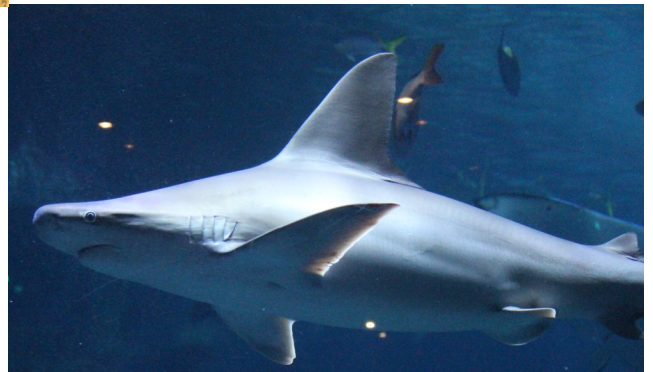


On the 17th of November 3 staff and 9 students went to visit the Aquarium in Melbourne. All students really enjoyed the energetic guide that took us around the aquarium constantly calling "Margret." Students enjoyed seeing sharks, jellyfish, a crocodile, turtles and the experience of a 4 Dimensional movie of Disney's Ice Age. All students and staff really enjoyed the day.



I was shocked to see an eel grab and eat a fish that swam past.

Learnt some new facts about sharks. There was a unicorn fish that was my favourite.



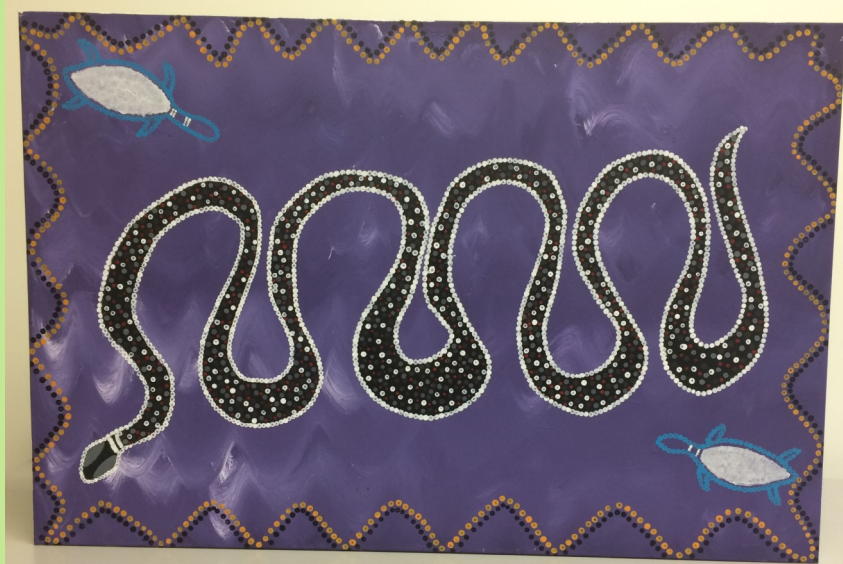
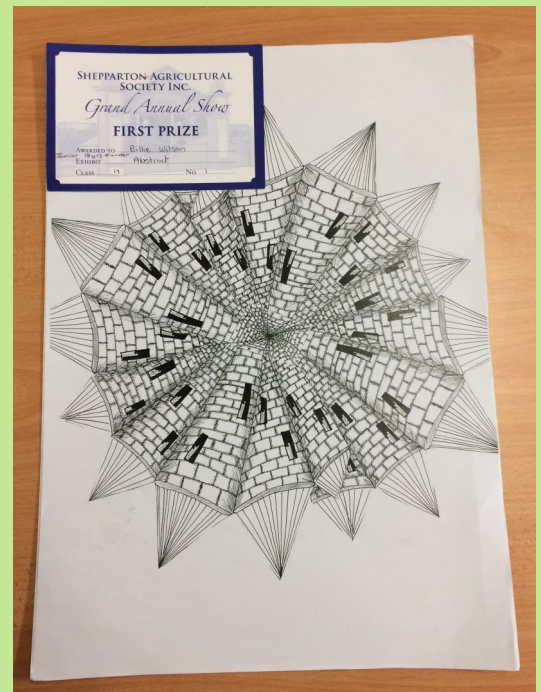
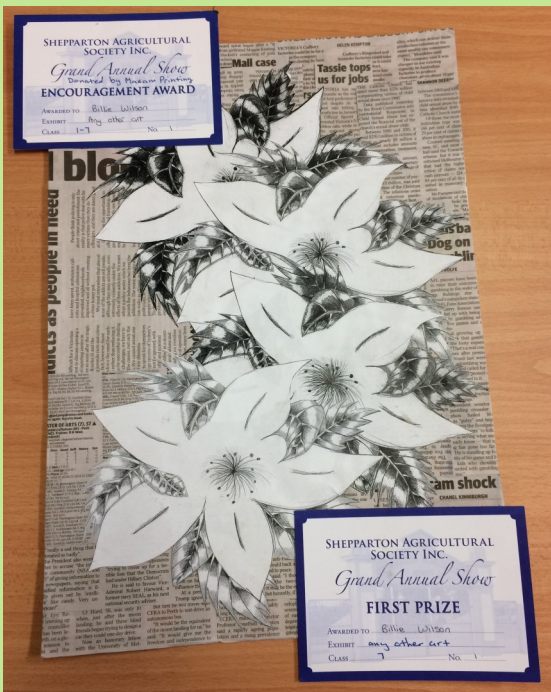
We saw 4 divers swimming with the sharks.







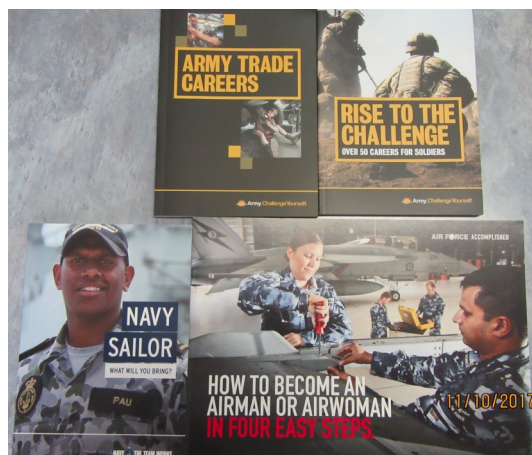
Students entered Drawings, Paintings and Mixed Media into the Shepparton Show in the categories of Under 18 and the Open category. Congratulations to all entrants. Two of our students were awarded 1st prize in the category they entered into. Their award winning work are below.



## Defence Force Careers Talk

On Wednesday the 11th of October we had Danny and Tyrone come and do a Defence Careers Talk at our campus. Students were engaged and actively listened to the information they presented.

Following on from the Careers talk we have planned a visit to the Tank Museum at the Puckapunyal Military Base. Students will have the opportunity to visit the sergeant's mess, have a guided tour of the museum and climb in and around a number of different armoured vehicles .



gotafe

## Hospitality Short Courses

Congratulations to the 12 students that completed the hospitality course at Go Tafe which included RSA, Barista and Food Handling.

Students will have the opportunity to practice what they learnt by participating in future events like RU OK and Café days that we planned at the campus.



# Happy Halloween

On Friday the 27th October we hosted a gold coin Halloween dress up day to raise money for the Children's Hospital. Sarah volunteered her time, costumes and props for the day and students decorated cupcakes. Everyone had a great day and we raised \$20 for the Children's Hospital. Thank you to everyone that supported the day.



# How much SUGAR is in that drink?



- Based on one teaspoon (tsp) = 4.5g of sugar



Thanks to Kaitlin Woods Dietician from Primary Care Connect who came in on Wednesday 15th November and shared her expertise with a number of students and staff.

Kaitlin delivered a very engaging session on sugar and had us guessing the amount of teaspoons we could be consuming in a number of different drinks. It came as some surprise that a 600ml bottle of sprite had as much as 15 teaspoons. Yikes!

Kaitlin has been coming in on occasions to support students in making healthier choices . Thanks again Kait for your support at SFLC.



By doing my PDS on a gardening project, I was able to create a garden bed that goes around the edge of the building. I planted Casuarina Glauca ( Cousin It plant), Swan River Peas, Kangaroo Paws, Finger Limes, Lavender and Rosemary. This made the building look better. This helped me complete my VCAL.

I have heard other people say, "It shows that students care about the place where they attend most of the week, students are taking pride in their school, also it looks good and it is an improvement to the school". Another comment has been, "it's been great to see people from outside the school community, comment on how much better the school looks with the garden. It was great to see a student doing this work."

My favourite part of completing this project was seeing the final product. I saw plants in the ground, I felt good that I achieved my PDS and I heard people saying positive stuff about the garden. One staff member said, "it has improved the whole look at the front of the school, great street appeal!" Another comment was, "it looks absolutely fabulous, it really improves the look of the a school."





Shepparton Sailability is a local not-for-profit self-funded community service which was established in 2012. The aim is to provide people of all abilities the opportunity to learn to sail . The Access yachts provide a safe, stable and easy to sail craft that can't tip over .

We offered this experience to students at our campus to try a new experience, to develop sailing skills and as a way of working collaboratively with new people as students work with a **mentor** until they have mastered their sailing skills. This was also a great opportunity for another of our students to take photos to work towards her VCAL and Studio Apps portfolios.



It was pretty good, I have sailed before.

*It was fun, I learnt how to sail and I would enjoy doing it again.*



It was really relaxing just letting your arm drag in the water as you sail around.



# RU OK?™

A conversation could change a life.



On Thursday 16th November, we held a pizza and coffee day to raise money for RU OK Day. Five students worked hard all morning to make pizzas and our barista trained students were able to practice their coffee making skills on staff, students and parents. The day was a huge success with \$129.50 raised. A big thank you to all those involved and to the amazing students that participated.

