

Benalla Flexible Learning Centre

- Individual Learning Plans
- Flexible timetables
- Mentor Support
- Involvement in the community
- Catering for students needs

WHAT'S ON

TUESDAYS GYM 2pm

WEDNESDAYS Waminda Cafe

THURSDAYS Yoga 10:15am

FRIDAYS Lake Walk 10:15am

FRIDAY 23RD NOVEMBER

Guest Speaker on Diversity
BFLC

TUESDAY 27TH NOVEMBER

Melbourne Zoo

THURSDAY 29TH NOVEMBER

Network Day
Student Free Day

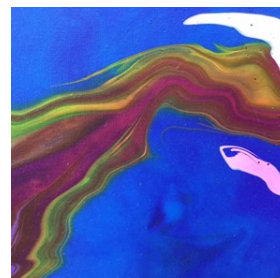
FRIDAY 30TH NOVEMBER

Wodonga Cup Holiday
Student Free Day

FRIDAY 7TH DECEMBER

Laser Biathlon
BFLC

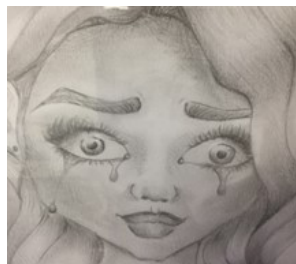
Final Student Art Exhibition for 2018



“Creativity Unlocked”

Tuesday 20th Nov to Sunday 9th Dec
Student Art Exhibition in Gallery 2 at NEA
Bridge Street Benalla

Come along and view a diverse range of artworks
Entry is free



**Thanks again for
the wonderful
support of**



North East Artisans

Student Free Days

Thursday November 29th—Network Professional Development Day
Friday November 30th—Wodonga Cup Holiday (for Melb Cup)

Cara our School Nurse will be on leave for two weeks.

Congratulations to Cara & Haydn on their forthcoming wedding.

Best wishes for a wonderful day and future together.



Guest Speaker—Diversity

Cara has organised a guest speaker from Kildonan Uniting Care Shepparton on Friday the 23rd of November at 11am.

Georgina works in the Diversity program supporting young people who identify as LGBTI+.

Georgina speaks at a number of different secondary schools promoting healthy and respectful relationships.

Even if LGBTI issues, don't directly affect you, it is a wonderful opportunity to respectfully understand diversity in others.

We look forward to having her at our school.

This is an opt in activity for those wishing to attend.

Introducing Cafe Club

Somewhere you can meet others, share a cuppa or just enjoy some social time

Perfect if:

- you are new to town
- you are wanting to meet new people
- you just need to get out of the house

Where: CWA Hall, Bridge Street, Benalla

When: Wednesday 10-12pm

Cost: \$2 donation

Coffee supplied by Benalla Flexible Learning Centre



For more information contact

Waminda Community House 57624528



Congratulations to Latecia & Bailey on the birth of their son Lucas



Open Mic Night



Paul, Misty, Crystal & Bri were supported by teacher Bri and performed at the Open Mic night on Friday as part of the Benalla Festival.

Congratulations to all for doing a wonderful job of performing in front of an audience.



EXCURSIONS

NOVEMBER 27 - Melbourne Zoo trip—limited seat

Please collect a permission form

GYM at Primal — Tuesdays 2pm - 3pm

YOGA – Thursdays – 10:15 am – 11pm

LAKE WALK – Fridays – 10:15 am – 11pm

Please remember to wear comfortable clothing for these sessions.

Hot Drinks for students

To cover the costs of Hot Milk Drinks, Benalla FLC is now proposing for students to pay \$5.00 per term to cover one hot drink per day.

Please give your \$5.00 to Lynne, so she can add you to the list of paid up students.



Wodonga FLC performance



Great to see the campuses working together. The music students from Wodonga FLC came to Benalla to perform the songs they have been working on for their Cert II in Music studies.

Following the performance the Wodonga and Benalla students had the chance to have a drumming jam together.

We look forward to more collaborative events in the future.

A great day.



Zoo Excursion

Tuesday November 27 there is an excursion to the Melbourne Zoo. Please return a signed permission form if you wish to participate. This excursion is limited to the first eight students to return forms



Laser Biathlon

Laser Biathlon is coming to Benalla Flexible Learning Centre on the Friday the 7th December.



This will be opportunity to experience Biathlon.

Biathlon is normal cross-country skiing and shooting but can be a combination of any cardio sport and shooting. You will be shooting a laser rifle a realistic target rifle that shoots a harmless laser.