

Benalla Flexible Learning Centre

- Individual Learning Plans
- Flexible timetables
- Mentor Support
- Involvement in the community
- Catering for students needs

WHAT'S ON

MONDAYS GYM 2pm

WEDNESDAYS Waminda Cafe

THURSDAYS Yoga 11 am

Please make sure you have returned your permission forms for gym and wear comfortable activity clothing for gym and yoga sessions.

THURSDAY 20TH JUNE

Unapologetically Myself

Stage performances

1:00pm — BFLC students

5:30pm — .Community

MONDAY 24TH JUNE &

TUESDAY 25TH JUNE

Somebody's Daughter Theatre Company Workshop
BFLC students

Great Opportunity—Not To Be Missed



UNAPPOLOGETICALLY MYSELF

The Somebody's Daughter Theatre Company will be returning to Benalla FLC for the final two weeks of term. There will be a performance for our students at 1pm on Thursday June 20th. BFLC students will open the show and set the scene with their own performance. This will then be followed by the main play. Our students had a fantastic time with this group last year and its lovely to see that they could include a trip to Benalla on this year's tour.

At 5:30pm there will be a public performance for anyone to come and enjoy.

These performances will be held at BFLC.

The following Monday afternoon and Tuesday the crew will return to Benalla to workshop with any interested students with the hope of making a short video at the end of the session on Tuesday.

This is a fantastic opportunity for our students , which I'm sure they will enjoy.

TIMES: THURSDAY 20th June — 1:00pm performance for BFLC Students.

THURSDAY 20TH June — 5:30pm Community performance.

See Page 3 for more details.



A refreshing sight

Students have been working with Zac from, Evergreen Garden & Landscape Solutions to put new life into the front of our school. Thank you to all involved. The changes are fantastic.

The back of the school has also been cleaned up. An amazing 25 tonne of garden refuse was removed. It is wonderful to have a space we can utilise more freely.



Next Term

Art will be held on Monday 1 – 3 pm and Gym sessions at Primal will now be held on Wednesday 2 – 3 pm. Please ensure you have collected a permission form for the sessions at the gym.

School Review

 — This year Benalla Flexible Learning Centre will be undertaking a review by the department. Every school in the state undergoes a review process each 4 years. It is a chance to celebrate all we have achieved over the last few years and is also an integral part of developing our school focus for the next four years. There is a survey now open where you can have input regarding the review prior to the department representative visiting the school in term 4. Click here <https://www.surveymonkey.com/r/RTQYHX9> to let us know what you think.

CONGRATULATIONS to Gemma Hunter.

Gemma has been nominated by GoTAFE Wangaratta for her work in Vocational Education Training State Wide award. Gemma has been nominated for her commitment and dedication to her studies in Beauty Services. Gemma has been studying this course as part of her VCAL program at Benalla Flexible Learning Centre. Gemma has been attending TAFE in Wangaratta each Wednesday for two years.



She has shown a fantastic commitment to her studies. Gemma has progressed to the second stage of judging and we wish her well at the finals. Congratulations Gemma we are very proud of you.

Tiny House Update



The students work on the Tiny House on Thursdays and Friday. We are now seeing something on the outside for all their hard work. Most of the structural framing is completed. The next step is to insulate and then it will be time for the fit out. We will keep you posted.



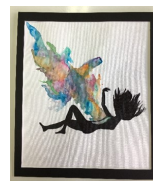
Don't forget to hand your stickers in!

Drop them in our collection box



Identity

Exhibition's final weekend please pop in to Gallery 2 at



NEA

North East Artisans

SOMEBODY'S DAUGHTER THEATRE & NOBODY'S FOOL THEATRE



Since 1980, **Somebody's Daughter Theatre Company** (SDTC) has been using the arts to break cycles of poverty and abuse faced by marginalised young people, including those in out-of-home care; women in prison and post release. Through the creation of high quality drama, art and film with the disenfranchised, the Company raises awareness of complex issues that lead to addiction, mental ill-health, family violence, disengagement, homelessness and institutionalisation; motivating personal, social and systemic change.

SDTC has worked intensively with marginalised young people in North East Vic (including 16 years of HighWater Theatre) and now young people in Greater Geelong and South West Victoria, Nobody's Fool Theatre.

Based in Geelong, Nobody's Fool Theatre (NFT) is a partnership between Newcomb Secondary College, Barwon Child, Youth and Family (BCYF) and Somebody's Daughter Theatre Company (SDTC). In 2016, this partnership established a full time creative education program for young people who are 'school refusers' or who are too volatile to be in mainstream school. All who attend come from disadvantage and are impacted with mental health issues. The young people involved aged between 12- 18 are now undertaking full time study – their classroom and campus is based at Courthouse Youth Arts.

SDT and NFT are returning to north east Victoria in June with workshops and performances of their latest play, *Unapologetically Myself*. Performances will be followed by Q & As.

UNAPOLOGETICALLY MYSELF

Unapologetically Myself is derived from the true stories of Nobody's Fool Theatre (NFT) young members. It is a play about identity – young people exploring their sense of who they are – their sexual identity, their cultural identity and the anxiety that often accompanies this search.

KMALA – a young African woman: *"They don't even see my gender they just see 'African'...and people are scared of what they don't know-*

Or WURRA – a young aboriginal man *"my hearts black but my skins not black enough ..."*

WURRA is also grappling with his gender identity. He sings

*Who am I?
What am I supposed to be?
Am I LGBTQIA or just me?
As a child my letters were ADHD
I've got a bad case, of acronymia*

What binds this diverse group of young people together is their search for connection - a place where they belong without judgment.

Co-director Maud Clark: *"This play is all about finding your people – it doesn't matter if they are the same colour or same sexuality – but people who support and accept you for who you are and who you can become. People who give you the courage to follow your own heart."*

Witnessing the authentic voice of these young people telling their stories on stage is a powerful experience for all who see it. An experience that often reassure others they are not alone or helps explain why some people act as they do. It is also wildly entertaining with humour, music, pathos and energy.

Typical responses from audience at last December's premiere of the show:

*Creative, rhythmic, kaleidoscope of young people's lives. Fantastic show! Inspirational! It made me feel human, hopeful, appreciative of life. (Lawyer 35)
I loved it. I wanted more. I don't feel so alone. For the first time I realised others might be going through the same things as me. (Student 14)*

Don't miss it!

