

Benalla Flexible Learning Centre

- Individual Learning Plans
- Flexible timetables
- Mentor Support
- Involvement in the community
- Catering for students needs

WHAT'S ON

MONDAYS Drumming
1:15pm

TUESDAYS L2P Program
GYM 2pm

THURSDAYS Yoga 10:15

MONDAY 14TH MAY

Party Safe
- with Cara & Pete

WEDNESDAY 16TH MAY

Silo & Landscape Art Tour
- Goorambat-Devenish-Winton

FRIDAY 18TH MAY

V8 Supercars
- Winton Motor Raceway

MONDAY 21ST MAY

Catering LLEN AGM

THURSDAY 24TH MAY

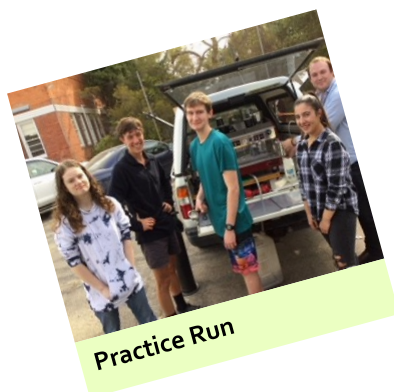
Submit. She Whispers
Someone's Daughter Theatre
& Nobody's Fool Theatre .

FRIDAY 25TH MAY

Positive Speakers Bureau

Social Enterprise

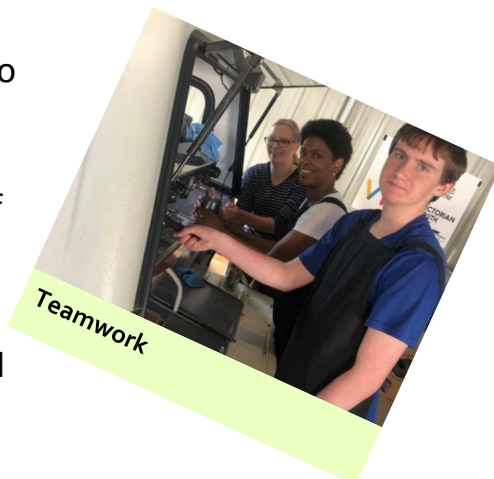
The coffee van is proving to be a great success. The students are learning valuable lessons in what is involved with organising and operating a business.



Practice Run

There are many aspects to be learned, from the planning, preparation, customer service, and of course making a great coffee!

Well done to all staff and students involved, fantastic teamwork!

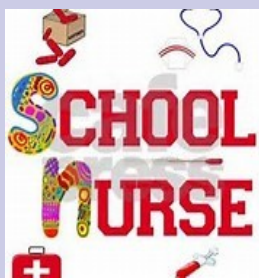


Teamwork

A big thank you to Intermezzo Café, who worked with the students at Winton's Hands on Trade Day and ensured they had the skills and systematic approach required to consistently create great coffee in a very efficient manner.



Workers in Action at Winton



**This year we are
really pleased to
have Cara at our
school every
Monday.**

Party Safe

Cara and Pete
will be talking to students
about what is required to keep
yourself and your friends safe
when partying.

Understand what a standard
drink is for different types of
alcohol.

Come and try out the
Beer Goggles.

Monday, 14th of May



WE WANT OUR STUDENTS TO TELL US WHAT THEY THINK!

We value student voice as a means to improving student engagement, wellbeing and quality instruction and are conducting a survey to find out what your child thinks of our school. The Attitudes to School Survey is an annual student survey offered by the Department of Education and Training to assist schools in gaining an understanding of students' perceptions and experience of school. Our school will use the survey results to plan programs and activities to improve your child's schooling experience.

Students from Year 10 to 12 at our school will participate in the survey. Your child will complete the survey online during school hours using a purpose built secure online survey tool. It is important to note that we are not in any way "testing" your child. Your child has the right to refuse or withdraw from the survey at any point before, during, or after completion of the survey.

Your child will be provided with a unique login to complete the survey. The student login is an assigned identifier that may be used to link data for statistical and research purposes only. All responses to the survey are kept anonymous in the response file. Personal identification data will not be recorded in the survey response file. This ensures that the confidentiality of your child's responses is protected at all times.

This year the Attitudes to School survey will be conducted at our school over the period Monday 21 May to Friday 1 June. The survey only takes 20 minutes to complete and occurs during your child's GP class time.

The survey results will be reported back to the school before the end of term 2. All survey data that is made available in reports are for groups of students only so that no individual student can be identified. Data suppression rules are used for schools with low student numbers per year level.

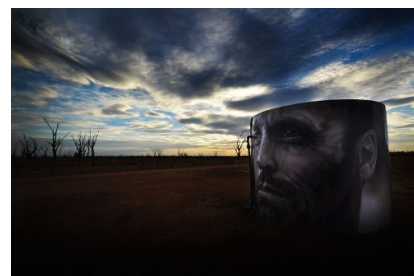
Wodonga Senior Secondary College uses the Survey results to help with long term planning, to gain student voice, to continue school wide improvement, to ensure continued positive outcomes for students.

If you would like more information, please speak to your child's teacher or visit: <http://www.education.vic.gov.au/school/teachers/management/improvement/Pages/performsurveyat.aspx>

Silo and Landscape Art Tour.

On Wednesday, May 16th, we are having an excursion to see silo and landscape art in the local region. We will travel in the bus to Goorambat, Devenish, Winton Wetlands and Mokoan to see many artworks by local and international street artists.

The bus will leave school at 11am and return at 2pm after a picnic lunch. This promises to be a fantastic opportunity to view highly acclaimed artworks in spectacular locations. If you would like to come, see Sean or grab a permission form at the sign in desk.



EXCURSIONS

MAY 16 - Silo & Landscape Art Tour - Goorambat, Devenish, Winton

MAY 18 - V8 Supercars - Winton Motor Raceway

Please collect a permission form for this session

GYM at Primal — Tuesdays 2pm - 3pm

YOGA – Thursdays – 10:15 am – 11pm

Please remember to wear comfortable clothing for these sessions.

V8 Supercars

On **Friday the 18th**

May there is an opportunity to go Winton Raceway to see the Supercars.

During this excursion we will have the opportunity to visit the pit area to see how a car racing team operates. As well as see and hear race cars go around a race circuit.



AT WINTON RACEWAY

This is the first careers expo I've been to therefore I had no idea what it was, so it was a bit of a surprise when I got there to see all the job opportunities and career paths there are.

Even though I've got an apprenticeship it was so breathtaking to see how many other options there are out there. It was helpful for a lot of the students to see how many career options there were.

I also found out there's carpentry in the army so that was awesome. Because I've always wanted to enter the army and didn't realise it was a career path-way I could take. Seeing all the cars like the mustang and trying to wrap it that was awesome. My favourite was the army's trucks they were awesome and the muscle car they had was epic the guy let us sit in the driver's seat so that was a great experience. The coffee truck we had there for our school was a huge hit, I think a lot of students enjoyed doing that.

Just before we left the army took the car out on the track and Lynne wanted to go but all of us wanted to see what they were going to do, She let us stay to watch it and they took it to the burnout section on the track and all the students and teachers all stood at the fence watching. They did a massive burnout. Pink smoke was going everywhere it was really interesting to watch but it didn't last long which was disappointing but it was worth it, all of us loved it Lynne couldn't see what all the fuss was about. It was such a good learning experience.

by David M

Student Review

Catering LLEN AGM Monday 21st May

Michele wants volunteers to assist with the preparation of food for this meeting.
Please speak to Michele or your teacher for more information.

Weekly Gym sessions at Primal





SOMEBODY'S DAUGHTER THEATRE & NOBODY'S FOOL THEATRE COME TO BFLC

SDT and NFT are returning to North East Victoria for a few days in May.

They will be coming to **Benalla Flexible Learning Centre on Thursday morning 24th May**. There will be a special workshop performance of a few scenes from their latest play "*Submit. She Whispers*". This particularly looks at our addictive behaviours and obsession with being 'plugged-in', amongst other things.



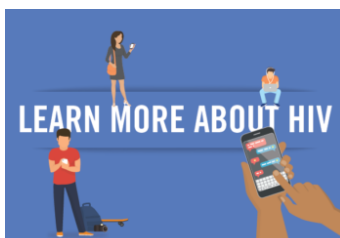
*Why would I read literature
I've got a Facebook feed
Why would I talk to people
Snapchat fills that need
I'm part of the online generation
Don't need old people's advice
Just leave me alone
With my device*

The performance will be followed by discussion, workshops and lunch.

This is a fantastic opportunity for us all at BFLC.

Positive Speakers Bureau—Friday 25th May

The positive speakers bureau educate the community about HIV to reduce the fear, myths, stigma and discrimination. Thus, enabling people to more fully understand what it is like to live with HIV.



The speakers are highly trained in public speaking and will share their personal journey.

We look forward to having Joel and Cath at our school.

IT'S GETTING CLOSER!

The next display of student art will be at NEA from Wednesday June 6 to Monday June 25, 2018.

Please make sure you set aside time to drop in and view the works of BFLC's very talented students.

Thank you to **NEA** North East Artisans for supporting BFLC artists.