

## Benalla Flexible Learning Centre

- Individual Learning Plans
- Flexible timetables
- Mentor Support
- Involvement in the community
- Catering for students needs

## WHAT'S ON

**MONDAYS** GYM 2pm

**THURSDAYS** Yoga 11 am

*Please make sure you have returned your permission forms for gym and wear comfortable activity clothing for gym and yoga sessions.*

## Parent Teacher interviews

*Will be conducted by phone*

**School returns**

**Tuesday 14 March**

**Pupil Free Day**

Hope you all have a lovely Easter see you in Term 2

## Newsletter — Issue 02 — Term 1 — 27 March 2020

I would like to thank all staff and parents for their hard work in supporting our young people to achieve their educational goals. In particular, I would like to thank Michele Ramage, our campus principal, for the tremendous work she has done to facilitate quality learning in a safe environment, for all our students. I am sure you will join me in wishing Michele an enjoyable and well-deserved Long Service Leave. In light of this, I will be Acting Principal at Benalla campus until her return.

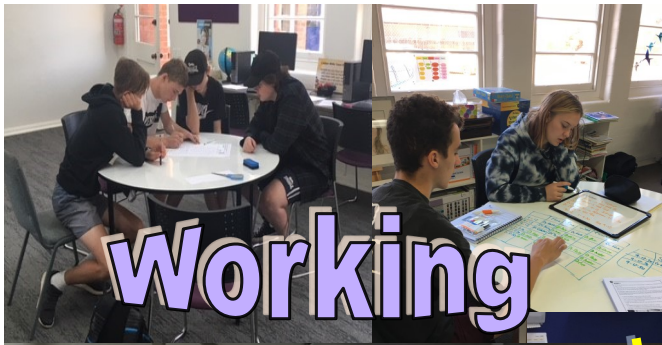
We have had a very busy and eventful year so far, and in some ways, one that no one would have expected. Despite starting the term with the backdrop of devastating bushfires, students came in ready to learn. Topical discussions with peers, hands on learning or working through Individual Education Plans was part of the daily routine. Students embraced new learning opportunities such as electives in Woodwork, Knitting and Animation. We also introduced Certificate II in Music Performance this term, and a personal highlight, was the quality mini-concert featured, at the end of term celebration. There is a lot to commend and I thought I would share these special moments with you in a photo collage.

Towards the end of the term, we were impacted by the developing events associated with COVID-19, corona virus. Staff worked tirelessly to prepare for the possibility to transition to remote learning whilst supporting students. In the light of this current situation, I have attached a letter from our Network principal, David Whitehead, as well as some information to support you and your family.

Acting Principal - Bridget James







Working



Music and drumming are always a hit!

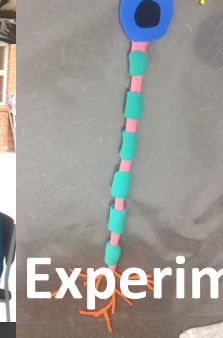


Getting

creative



Wood Work



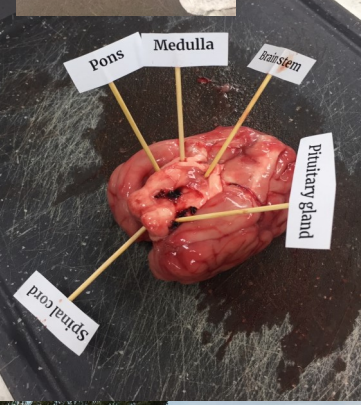
Experiments



Knitting



Equine Therapy



Paddling on Benalla Lake

